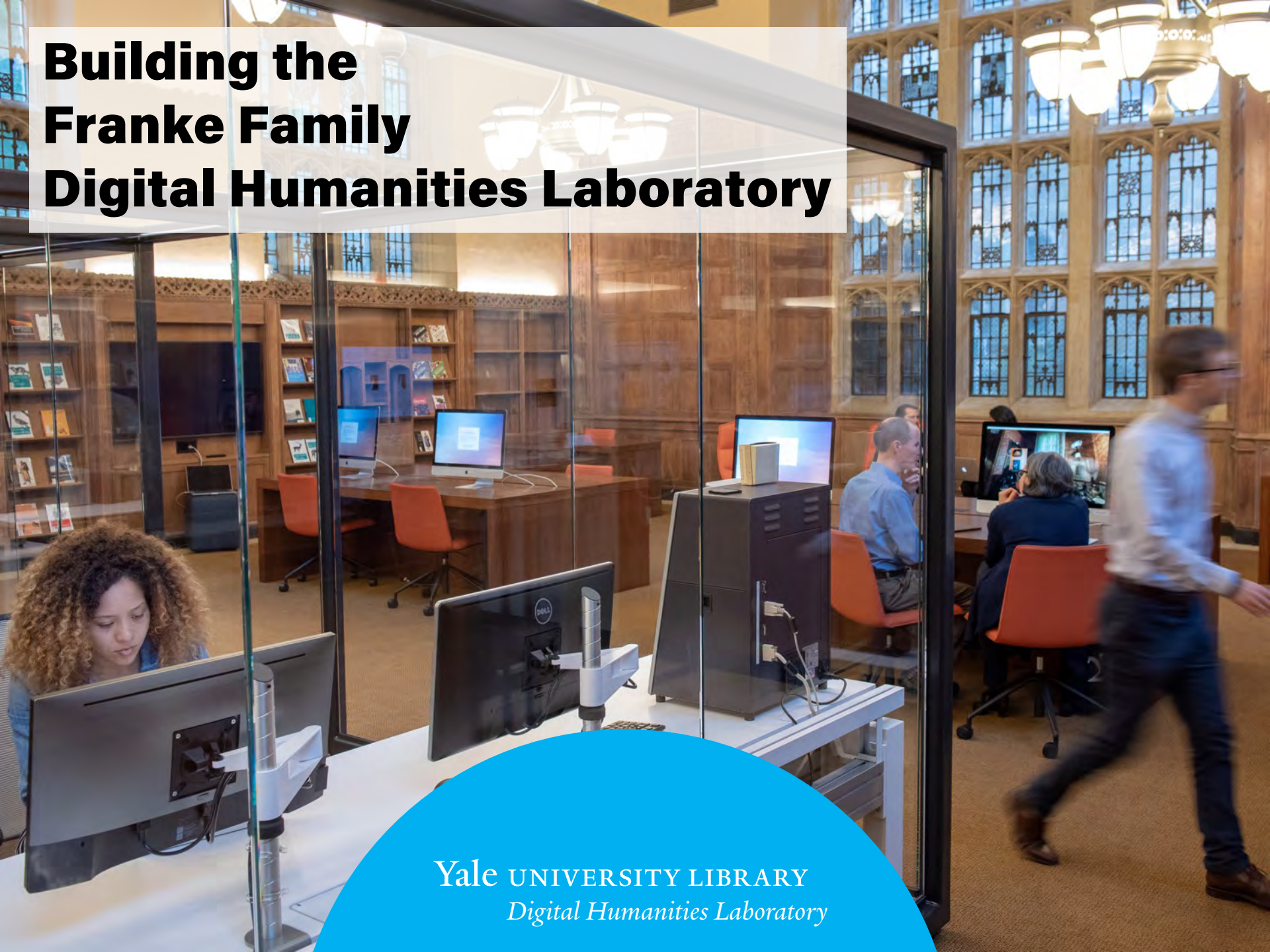


# Building the Franke Family Digital Humanities Laboratory



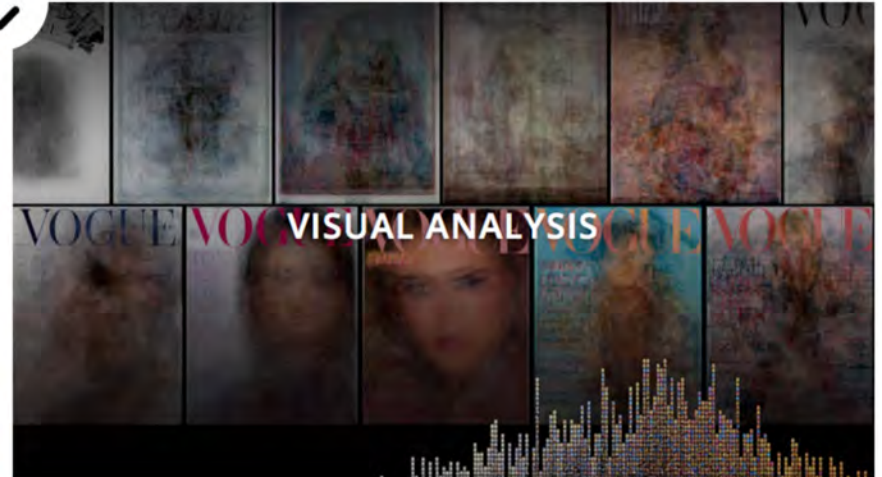
Yale UNIVERSITY LIBRARY  
*Digital Humanities Laboratory*



## What do DH projects look like?

Digital humanities projects use a wide range of methods and appear in a variety of forms. Whether you want to create a graph for a course paper, build an interactive website, or develop custom software, the guides below outline some of the popular techniques used in digital humanities research.

### DH METHODS



**What do DH projects look like?**

Digital humanities projects use a wide range of methods and appear in a variety of forms. Whether you want to create a graph for a course paper, build an interactive website, or develop custom software, the guides below outline some of the popular techniques used in digital humanities research.

DH METHODS

TEXT ANALYSIS

VOGUE VISUAL ANALYSIS

# **Quantitative / Algorithmic Analysis of Large-Scale Data**

## **to Answer Humanistic Questions**

SPATIAL ANALYSIS

NETWORK ANALYSIS



# Yale University Library

“The Library is the  
Heart of the University”

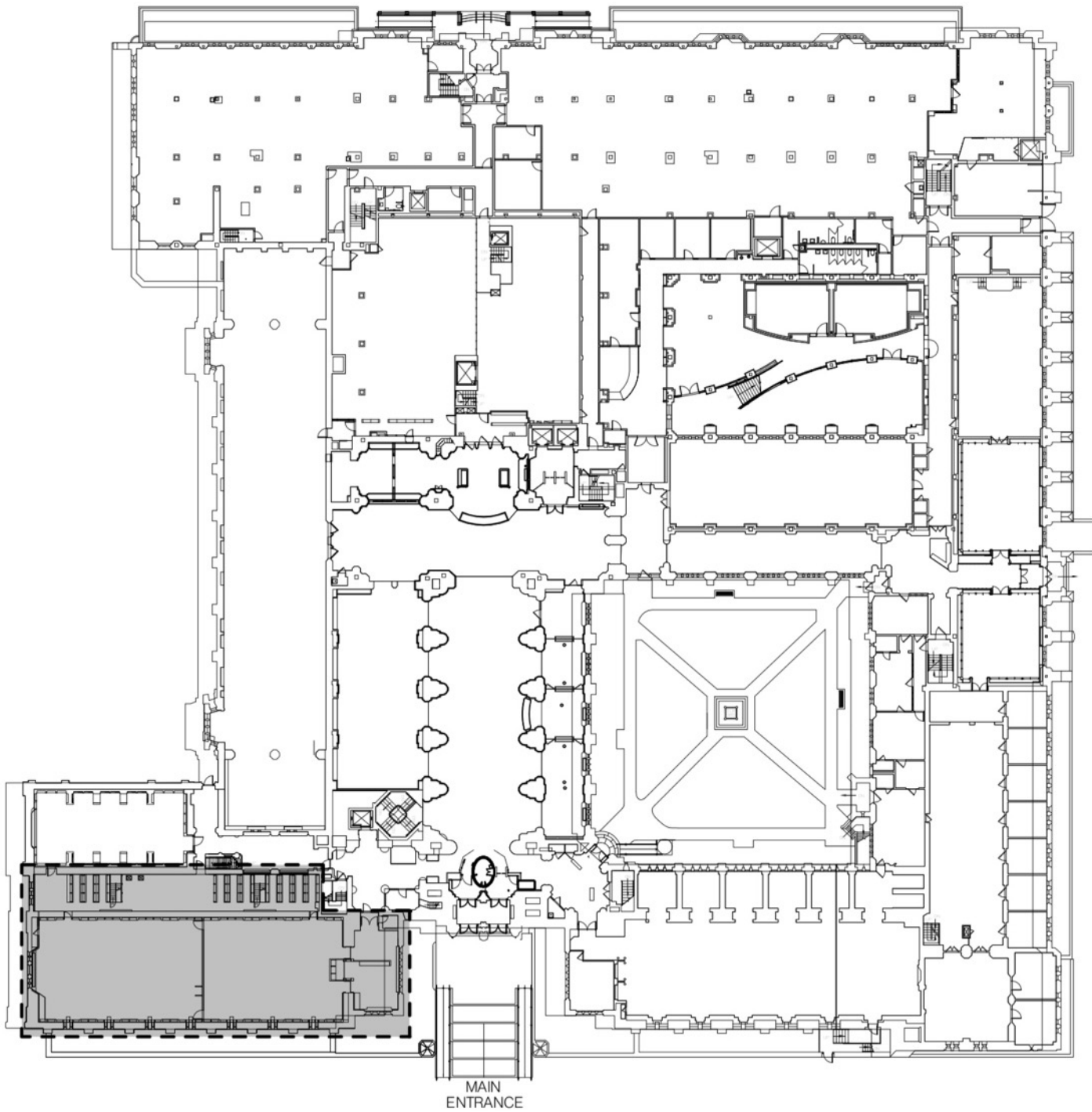
500+ employees

15 million+ print &  
electronic volumes

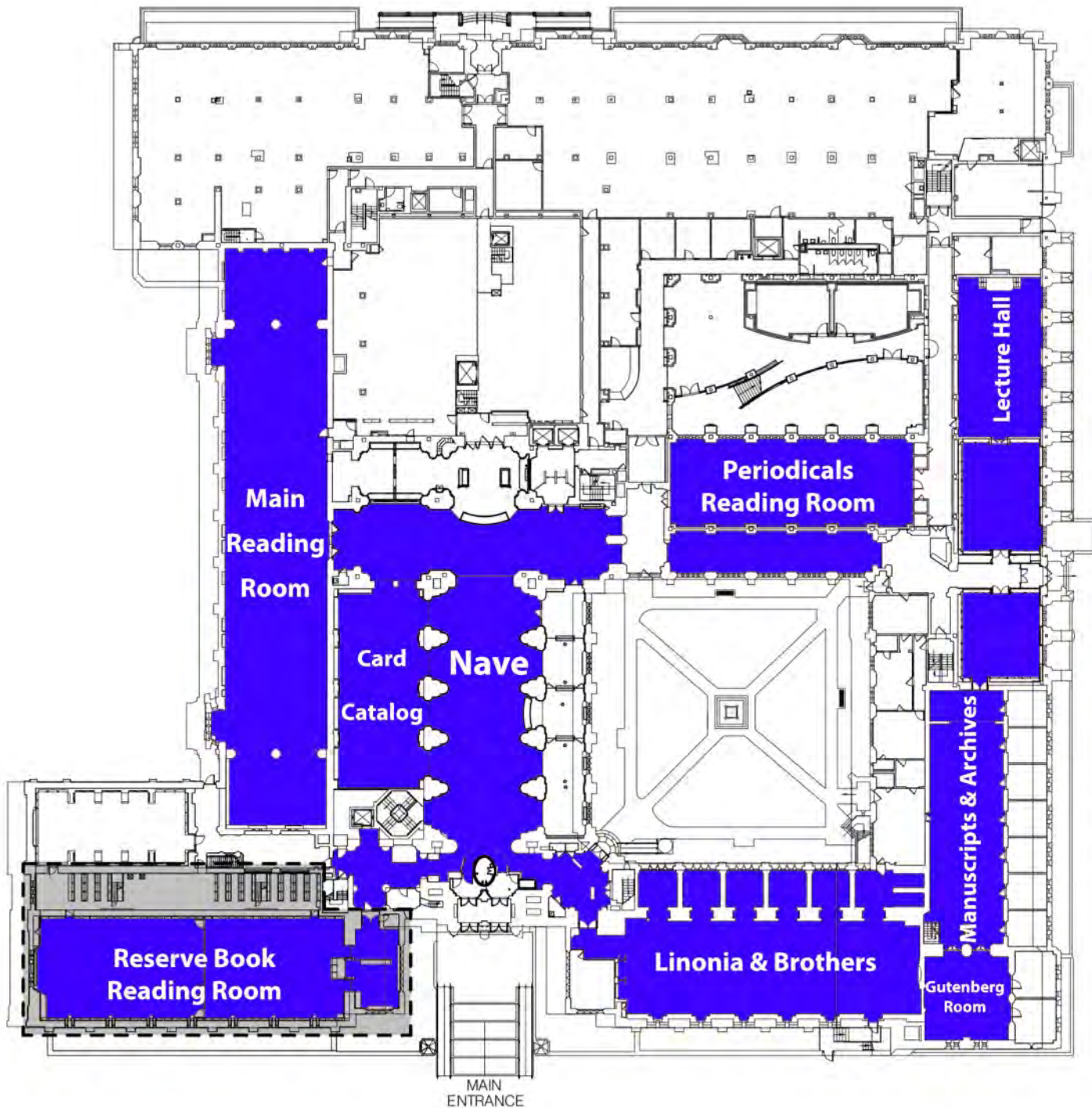
15 libraries across  
campus

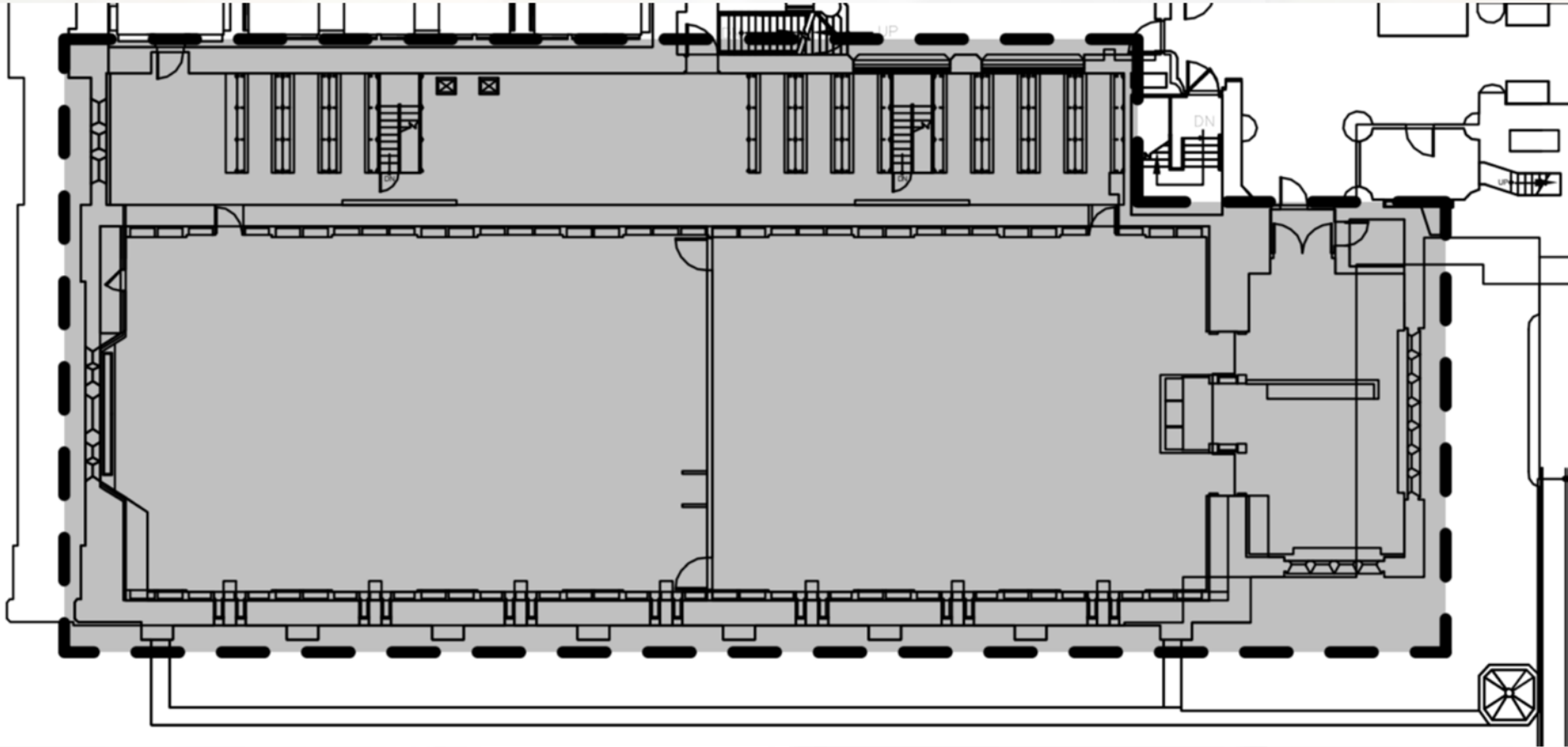


*Sterling Memorial Library*









**4,800 sq ft / 450 m<sup>2</sup>**

# Goals

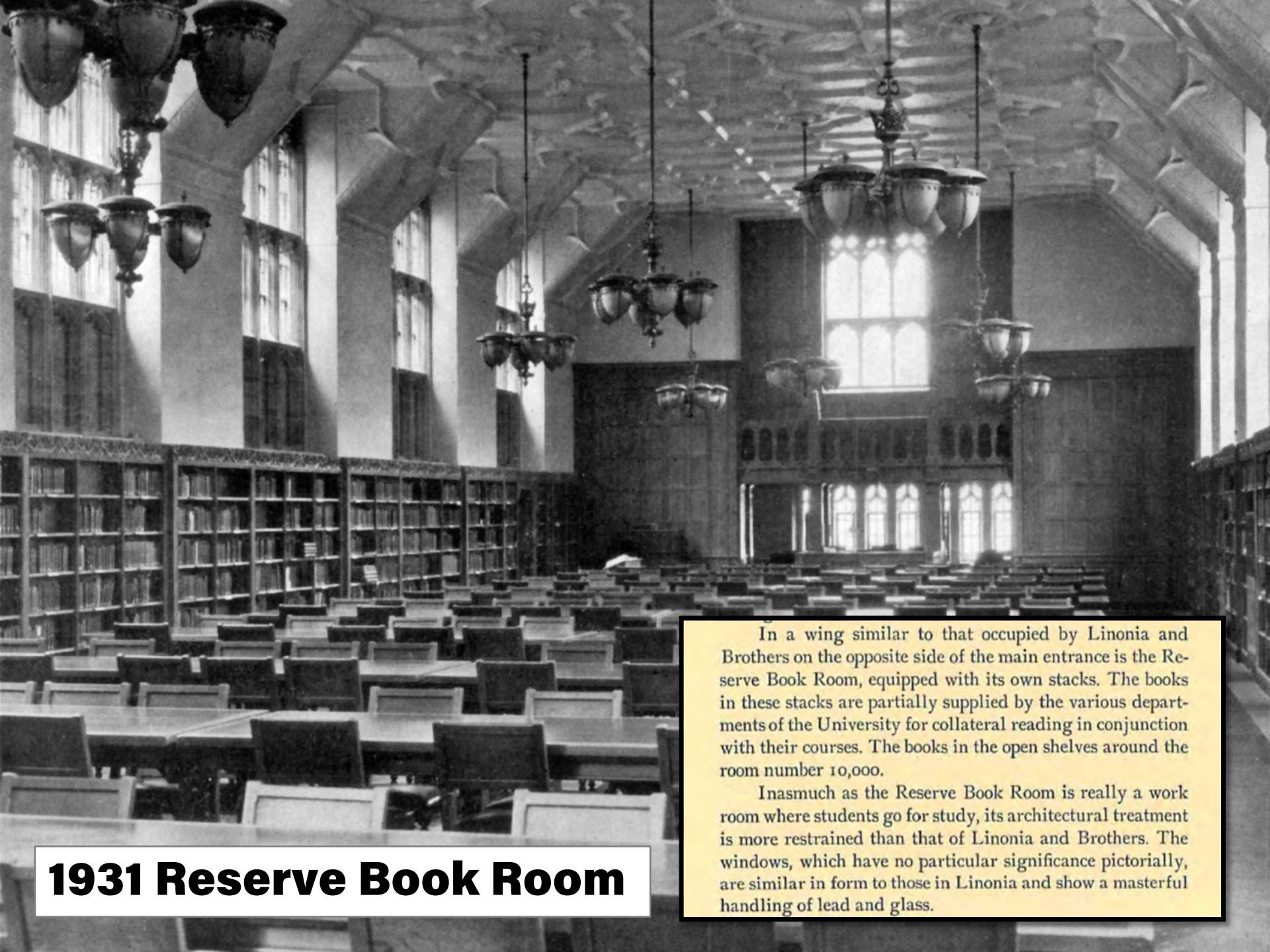
## ...and Priorities

- Bring Digital Affordances into a Historic Room
  - **Materials**
  - **View corridors**
- Make Digital Humanities Labor Visible
  - **Security**
  - **Transparency**
- Balance Structured & Flexible Space
  - **Individual activities**
  - **Group projects**
  - **Larger workshops**



# Bring Digital Affordances into a Historic[izing] Room

Or, Digital Scholarship in the Tudor Court

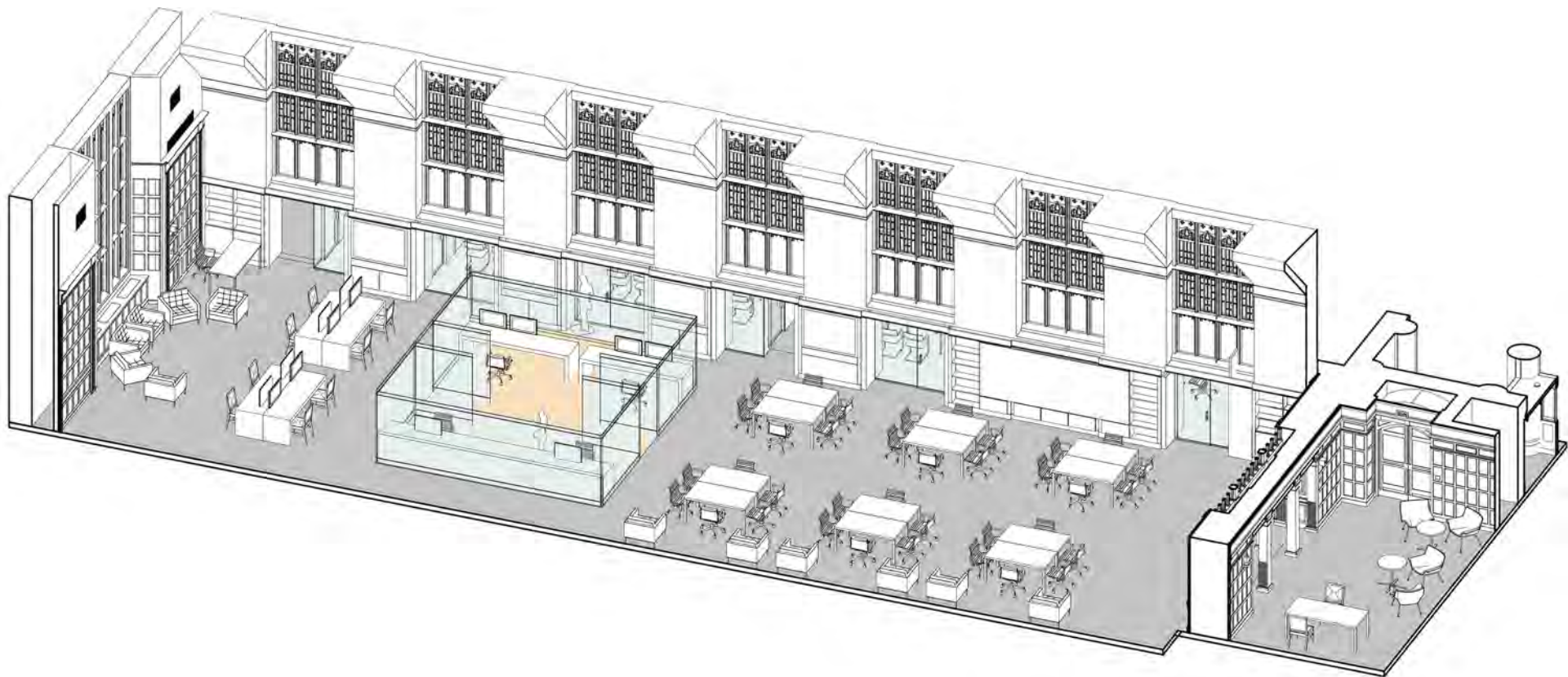


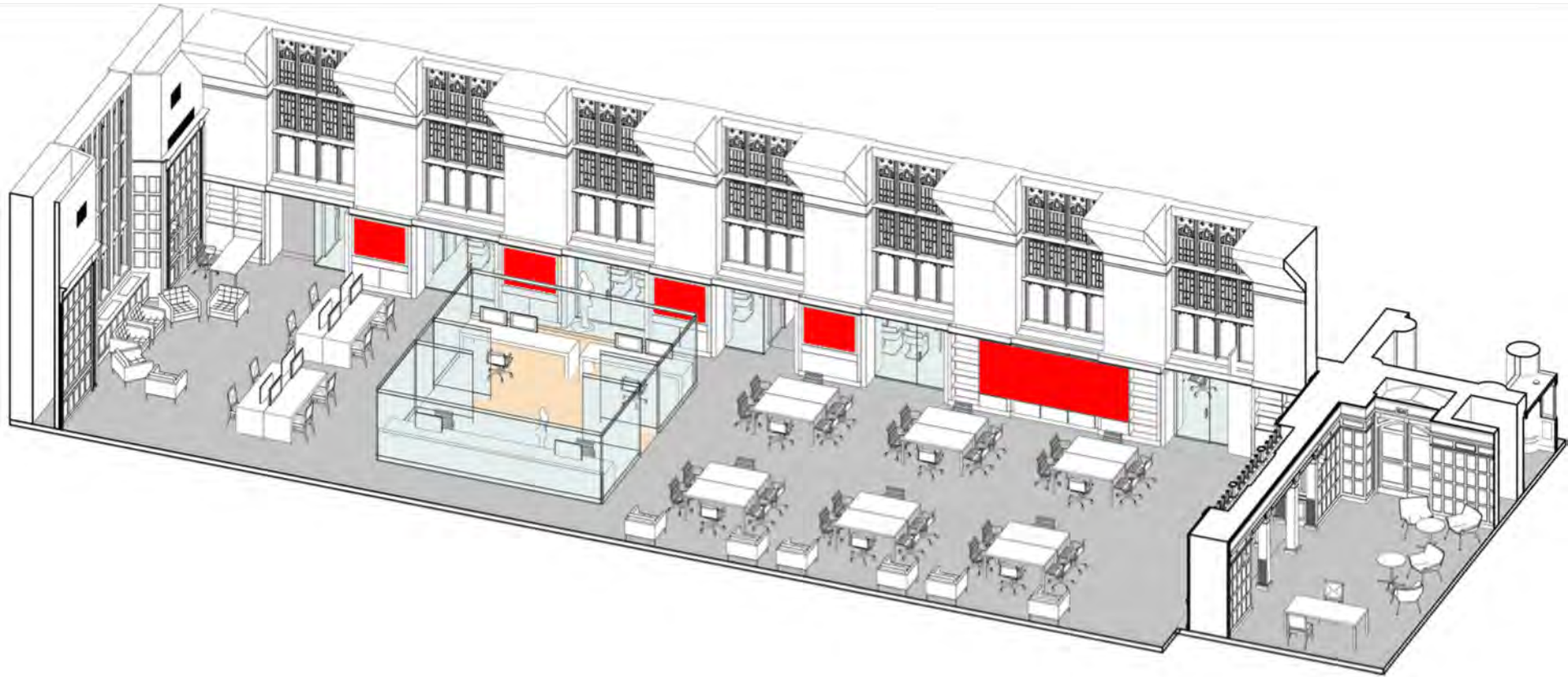
## 1931 Reserve Book Room

In a wing similar to that occupied by Linonia and Brothers on the opposite side of the main entrance is the Reserve Book Room, equipped with its own stacks. The books in these stacks are partially supplied by the various departments of the University for collateral reading in conjunction with their courses. The books in the open shelves around the room number 10,000.

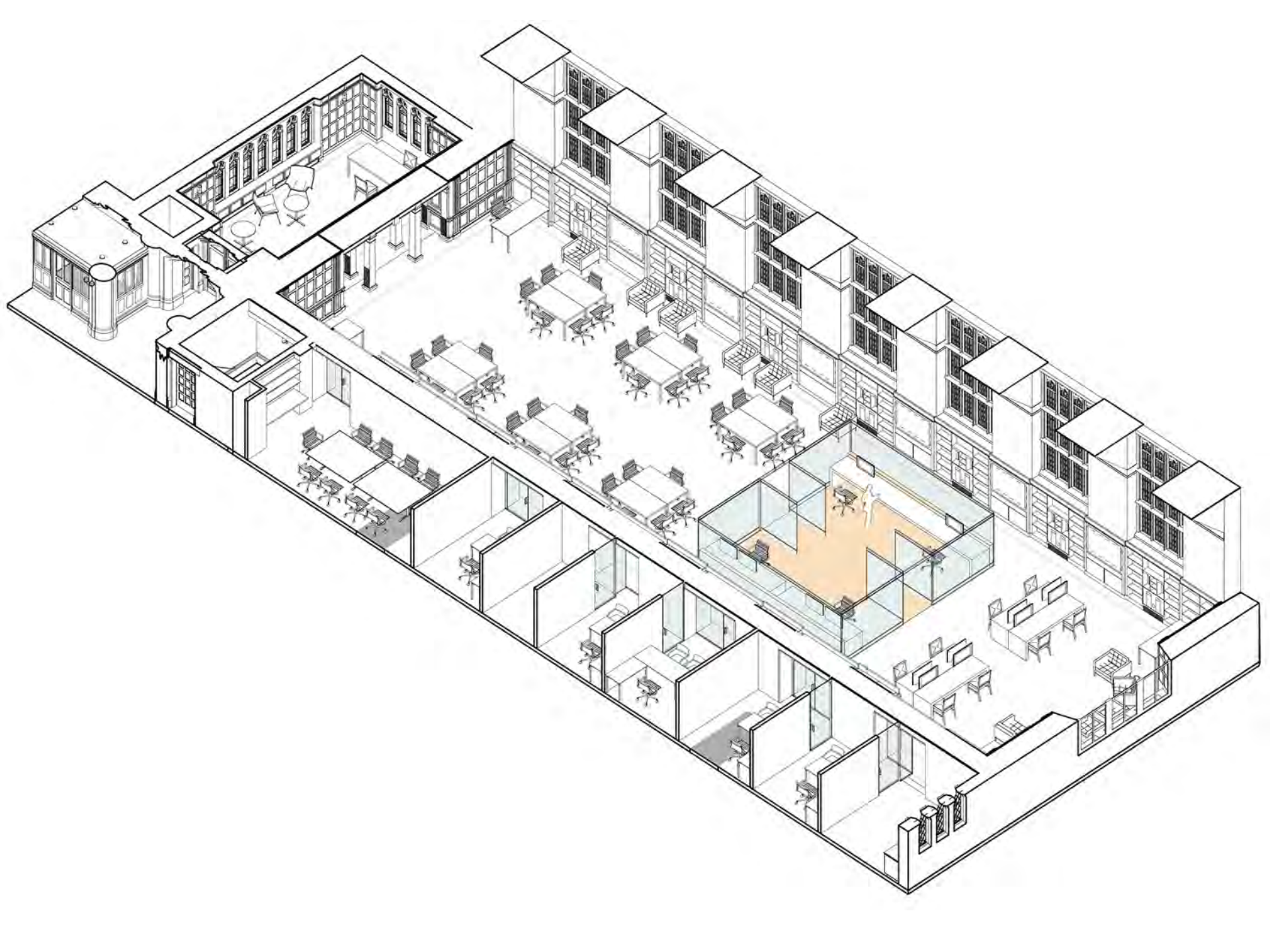
Inasmuch as the Reserve Book Room is really a work room where students go for study, its architectural treatment is more restrained than that of Linonia and Brothers. The windows, which have no particular significance pictorially, are similar in form to those in Linonia and show a masterful handling of lead and glass.

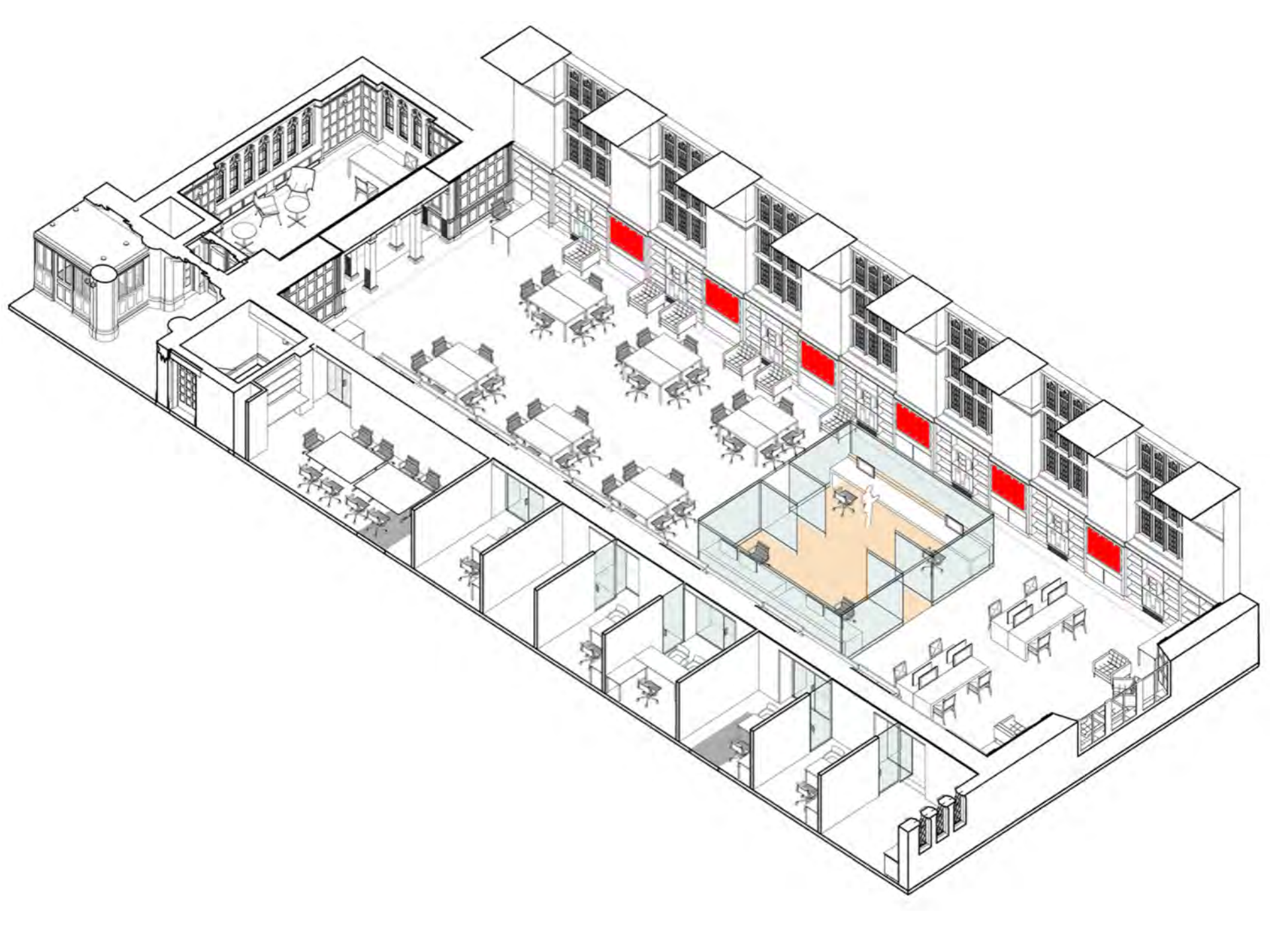




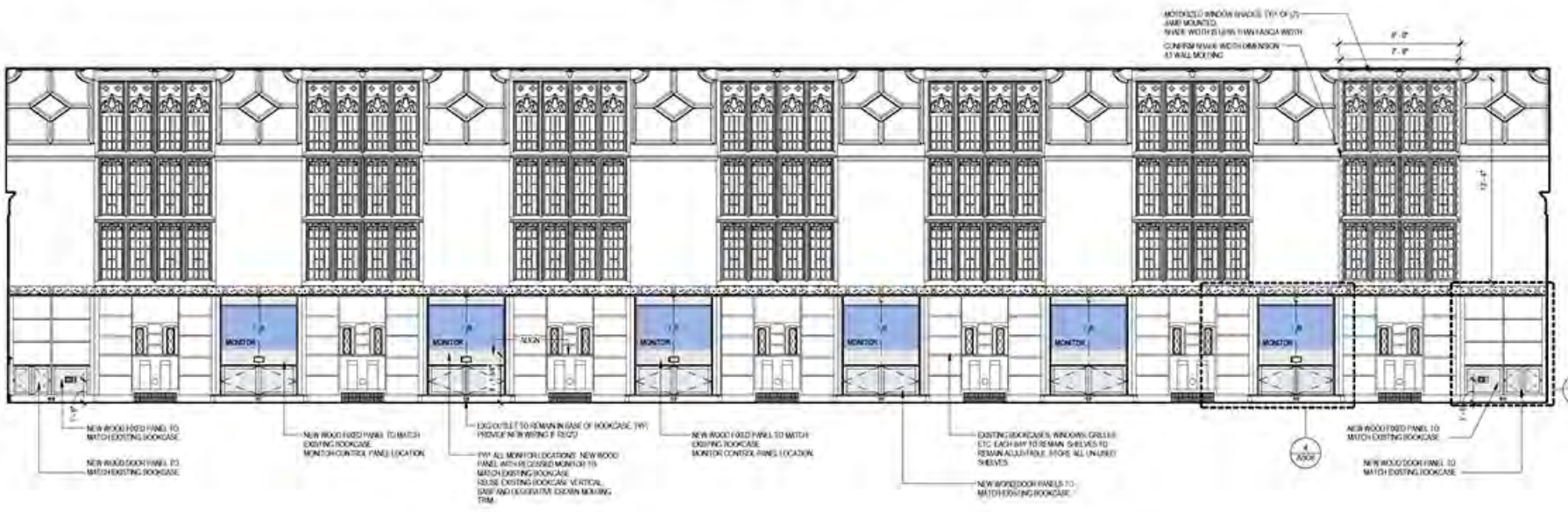
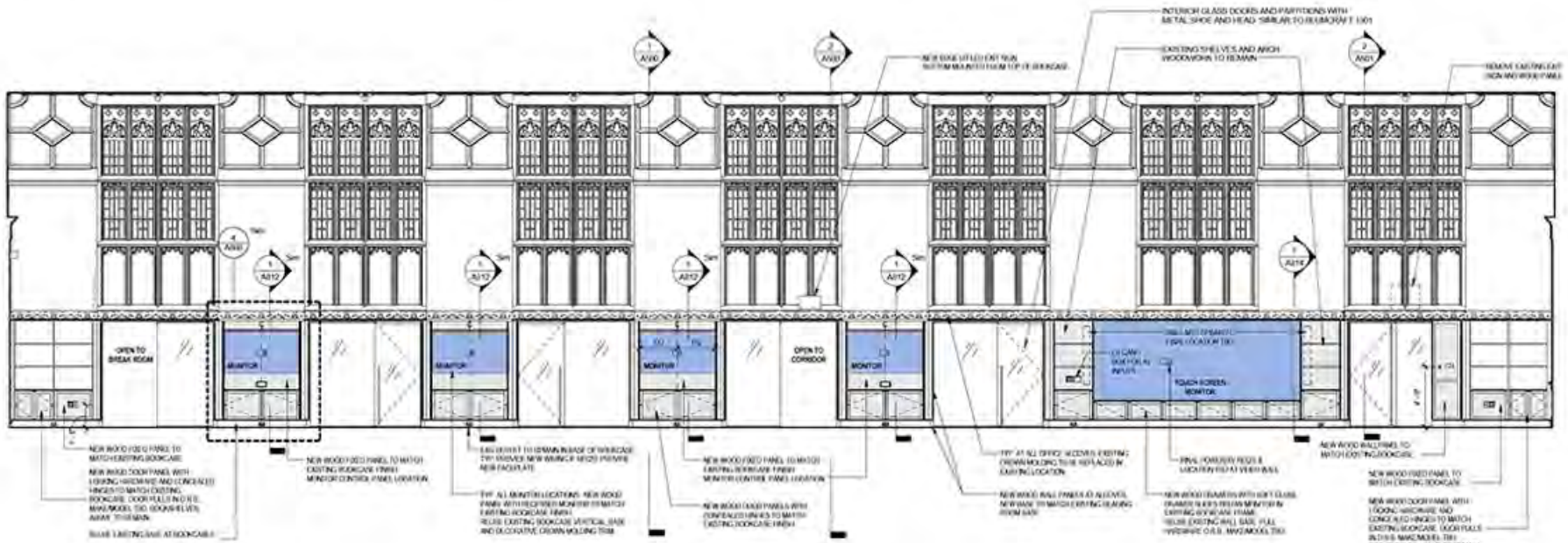
















# Materials





**Materials**





# Materials





**Unobstructed Axial View**







**Unobstructed Axial View**







**Unobstructed Axial View**



# Make Digital Humanities Labor Visible

Or, why do you need a special room?





**What can't be done on a laptop?**



## **Specialized Computation**

- Deep Learning / GPU
- High RAM (128gb)
- Large Storage (>4tb)
- Multi-core/thread (18/36)
- VR/AR Headsets
- 5k/8k monitors

## **Digitization**

- Book Scanner
- Microfilm Scanner

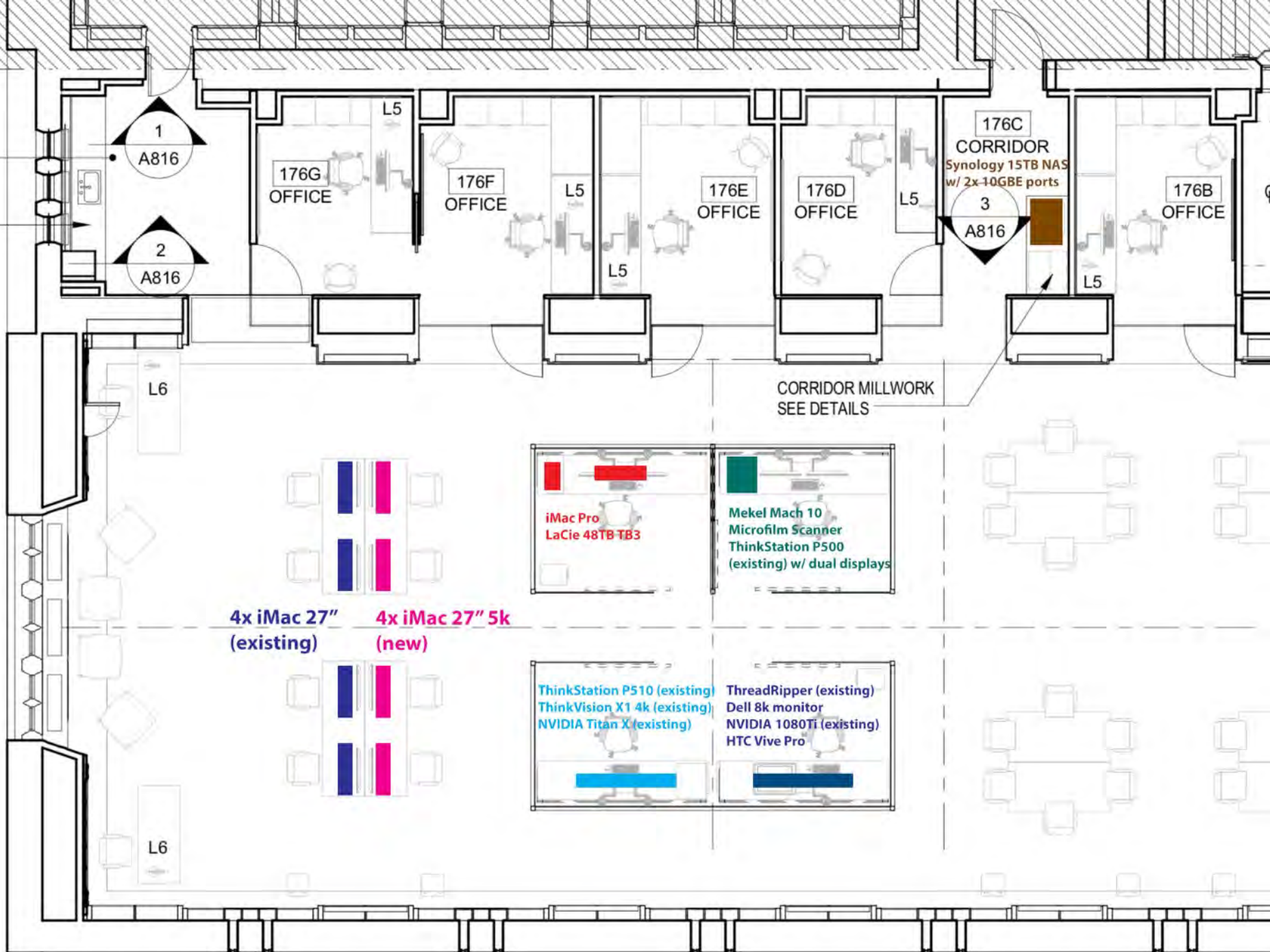
## **27" iMacs**

- GIS (ArcGIS, QGIS)
- TEI-XM (Oxygen)
- Text Analysis (Mallet)
- Stats (R)

# **Special Projects Cube & Workstations**







1  
A816

2  
A816

176G  
OFFICE

176F  
OFFICE

176E  
OFFICE

176D  
OFFICE

176C  
CORRIDOR  
Synology 15TB NAS  
w/ 2x-10GBE ports

176B  
OFFICE

3  
A816

CORRIDOR MILLWORK  
SEE DETAILS

4x iMac 27"  
(existing)

4x iMac 27" 5k  
(new)

iMac Pro  
LaCie 48TB TB3

Meikel Mach 10  
Microfilm Scanner  
ThinkStation P500  
(existing) w/ dual displays

ThinkStation P510 (existing)  
ThinkVision X1 4k (existing)  
NVIDIA Titan X (existing)

ThreadRipper (existing)  
Dell 8k monitor  
NVIDIA 1080Ti (existing)  
HTC Vive Pro

L6

L6

L5

L5

L5

L5

L5

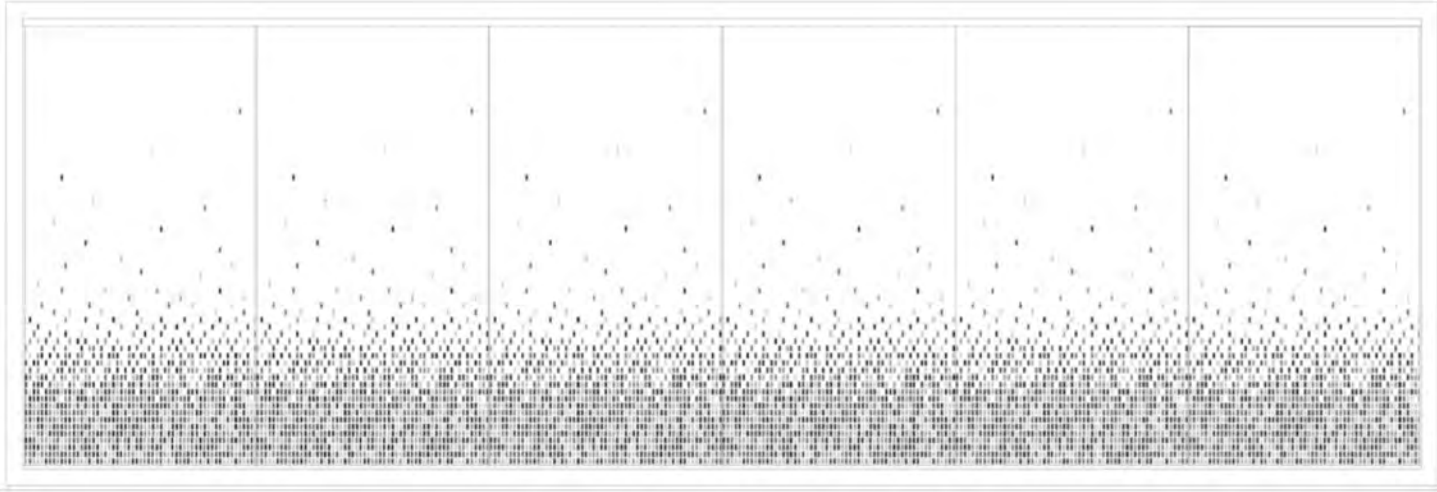


# Special Projects Cube

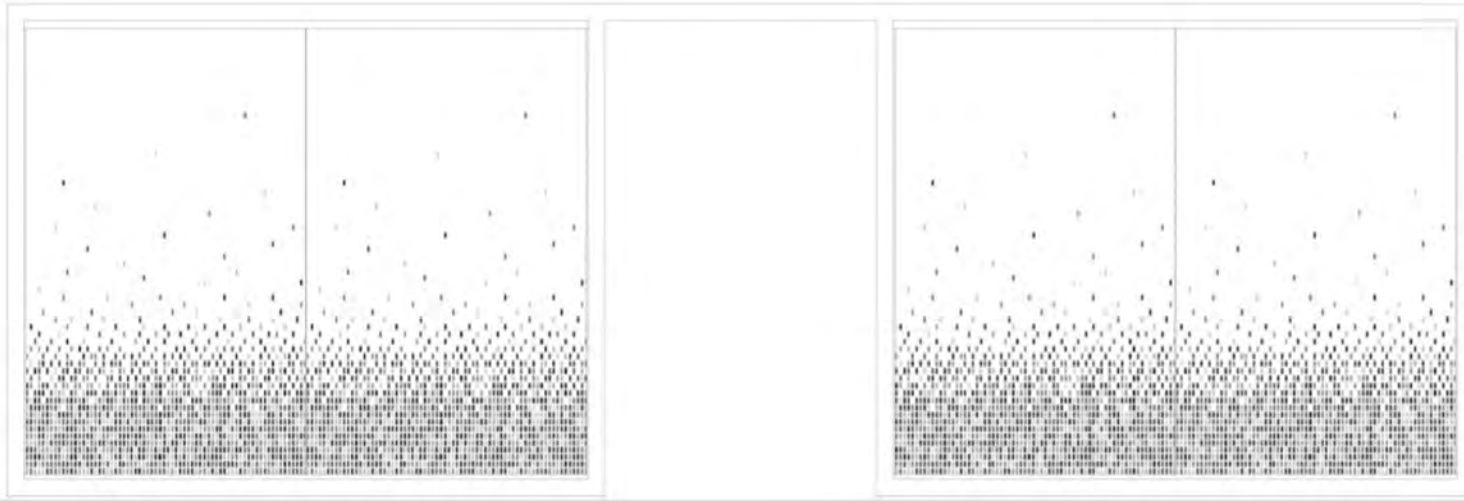




# Special Projects Cube



2'-6"



2'-6"

# Special Projects Cube - Frit Pattern







# Special Projects Cube & Workstations



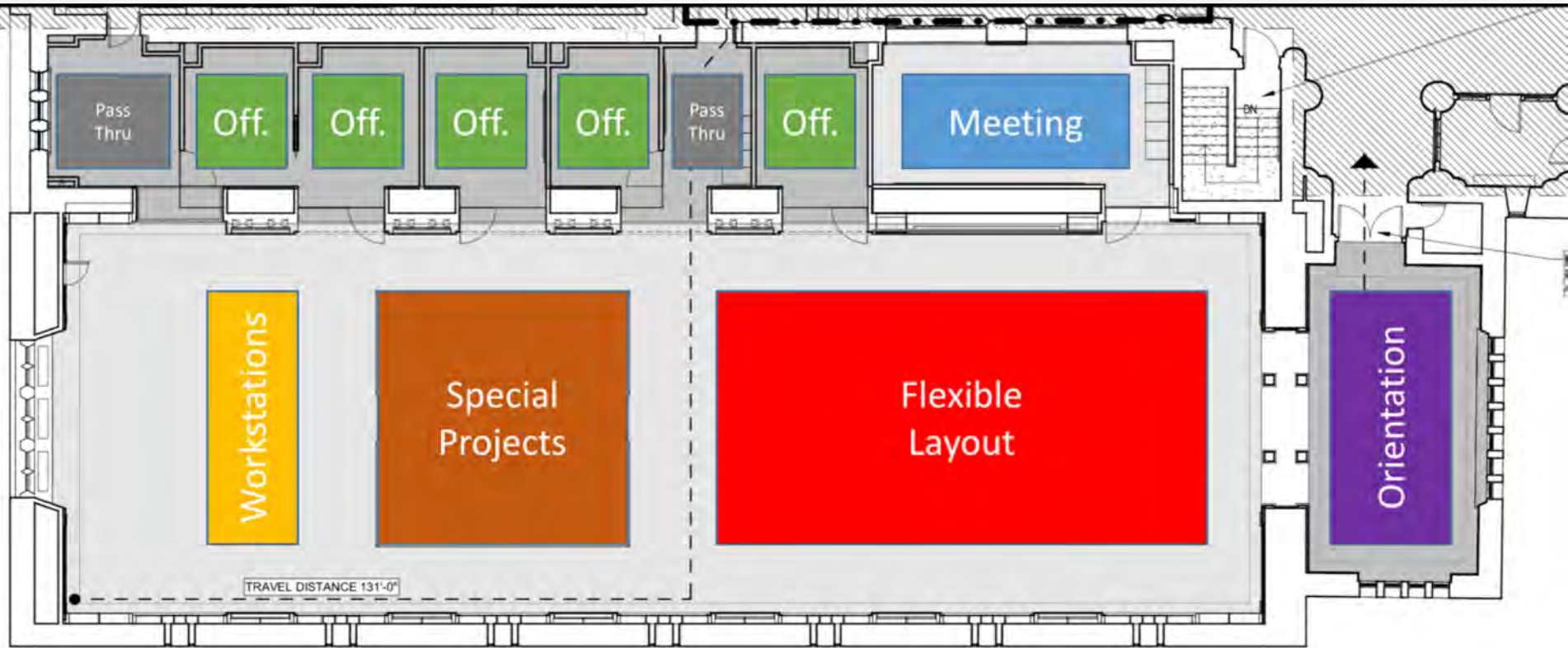


# Workstations



# Balance Structured & Flexible Space

Or, Building for the Unexpected



# One Room, Multiple Zones





# Scales of Interaction: 1





## Scales of Interaction: 2





## Scales of Interaction: 2

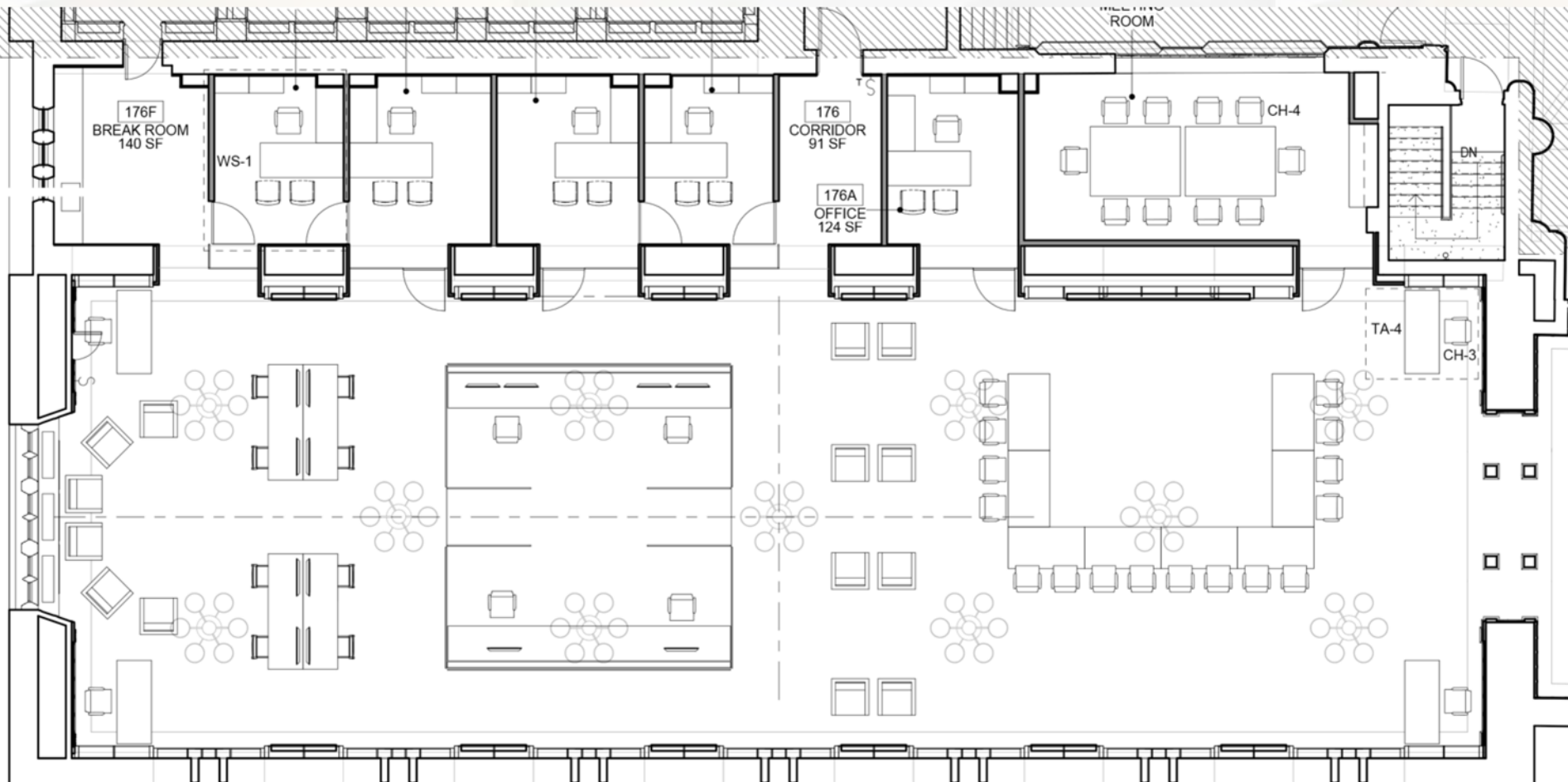




# Scales of Interaction: 3

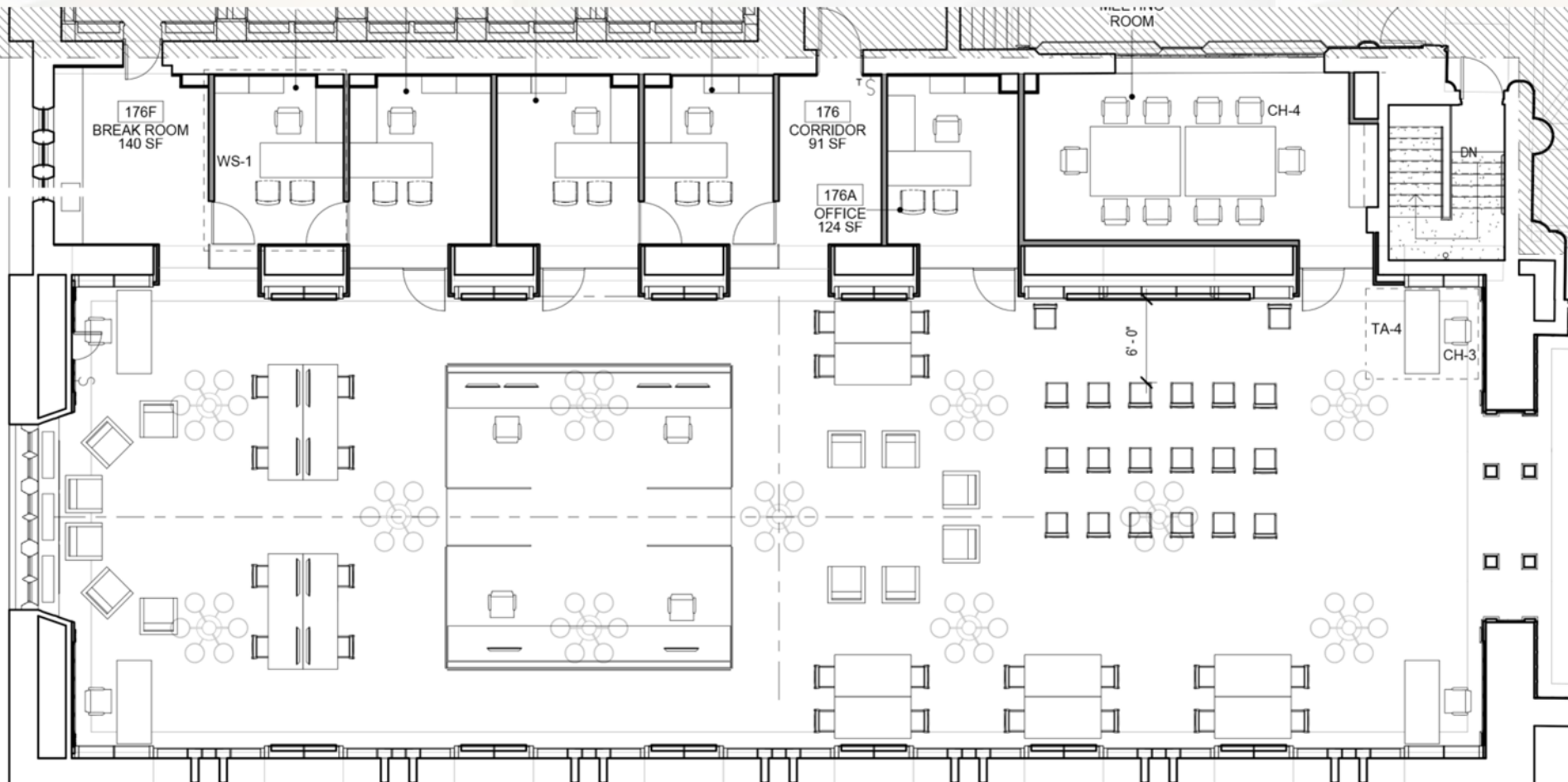






# Scales of Interaction: *n*

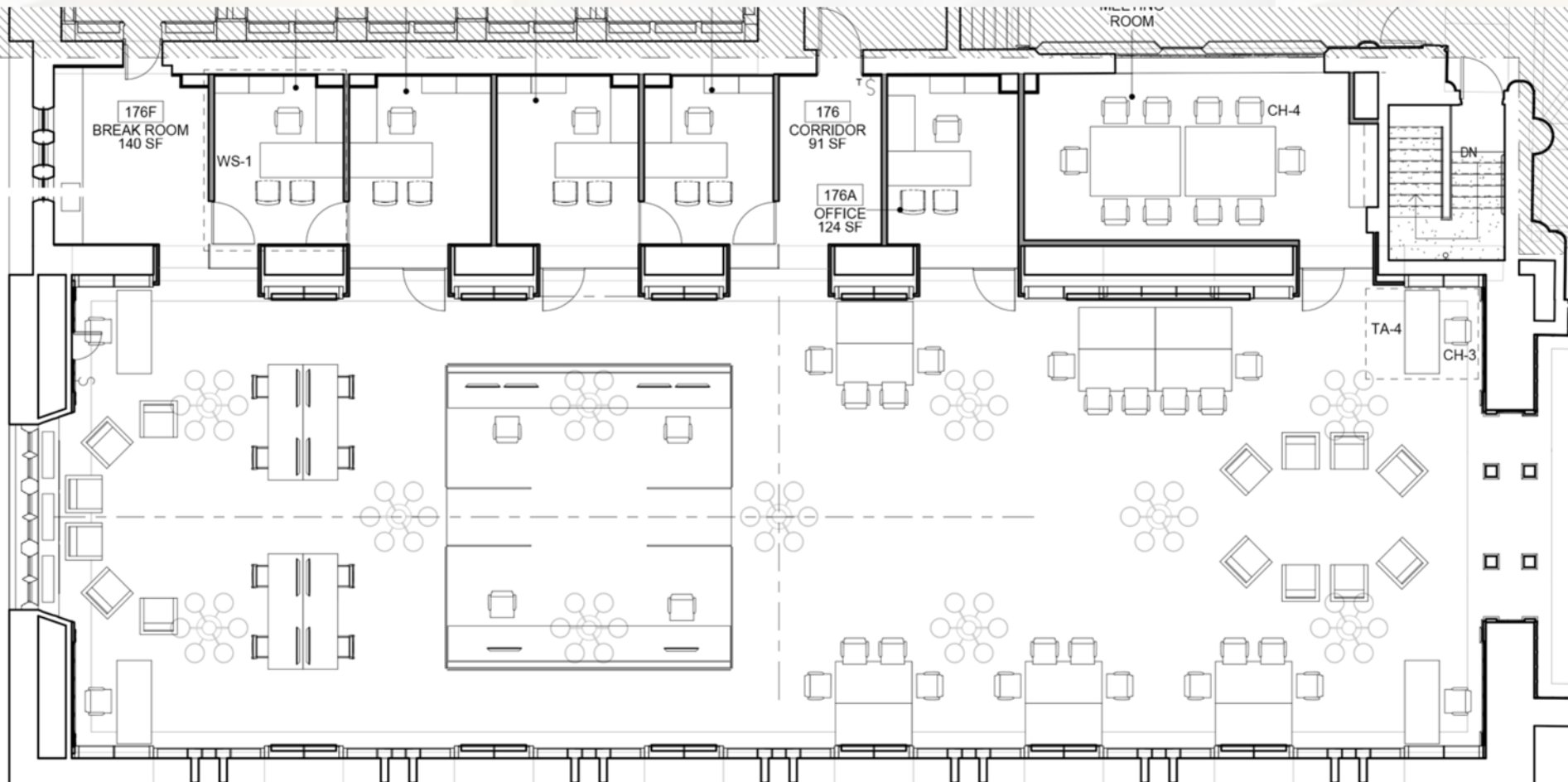




# Scales of Interaction: *n*







# Scales of Interaction: *n*

# Relationships with Campus Programs & Facilities

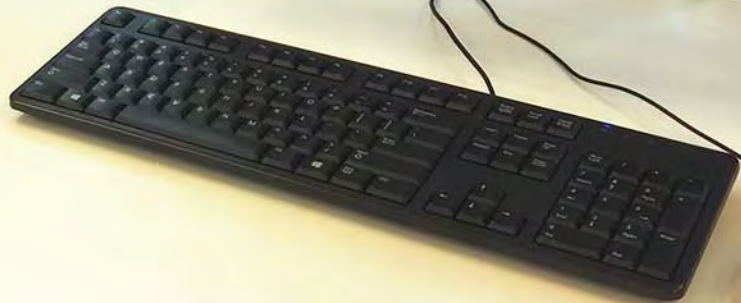
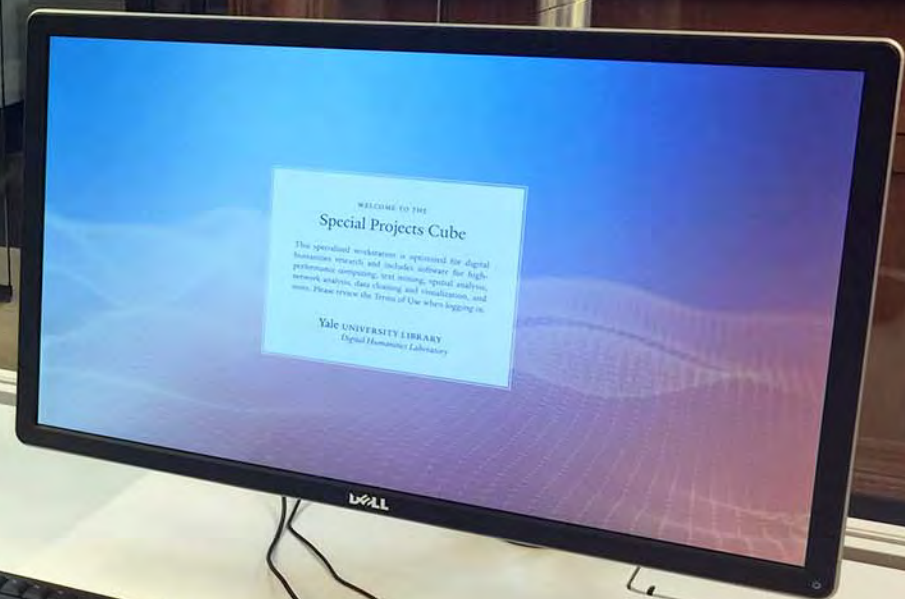
- Activate Physical Collections
  - Books
  - Microfilm
- Locate DH Support Close By
  - Office Space
  - Meeting Rooms
- Support Non-Resident Team Members
  - Touchdown Desks



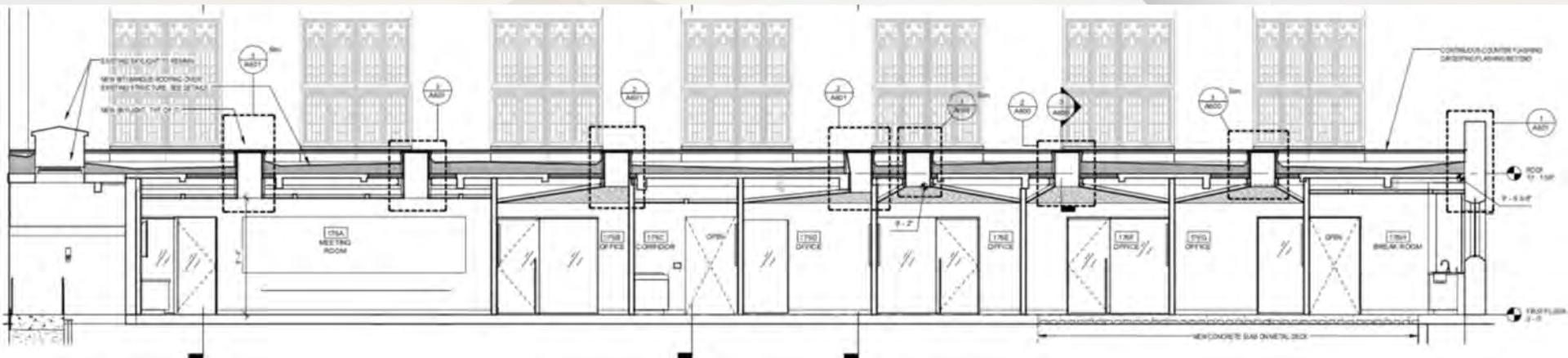
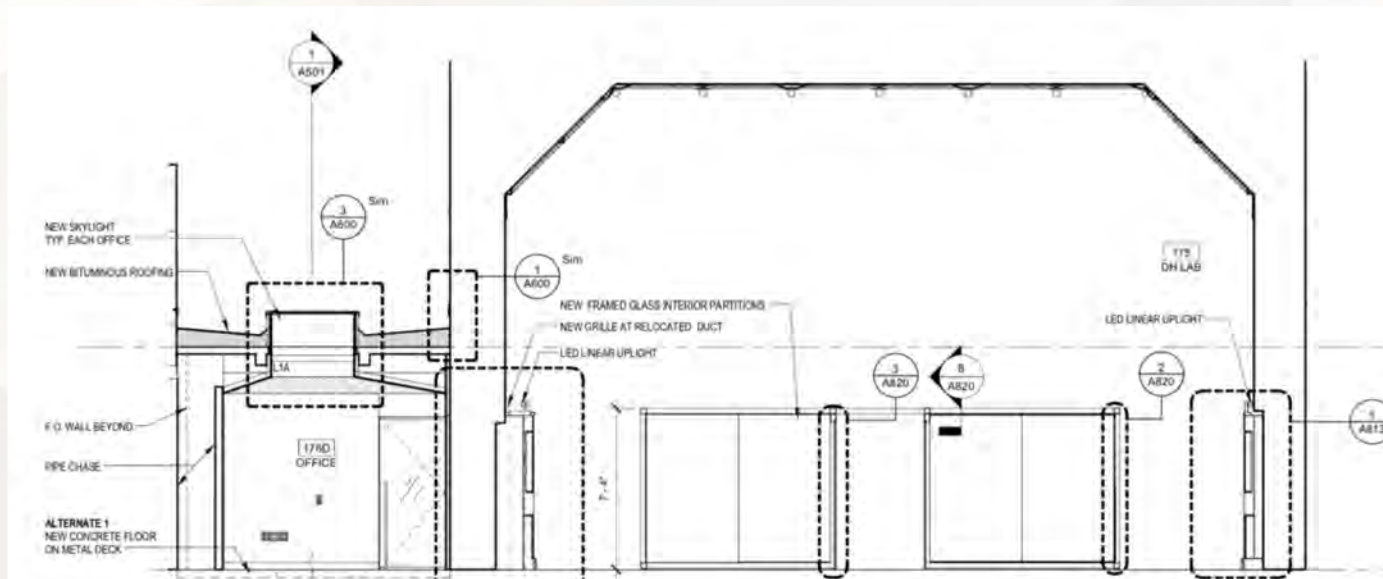
# Activating Physical Collections: Research Digitization



1) Scan material 2) Recognize text 3) Discard images







# Adjoining Office Space (Former Bookstacks)



## **Adjoining Office Space (Former Bookstacks)**





## **Adjoining Office Space (Former Bookstacks)**



## Adjoining Office Space (Former Bookstacks)

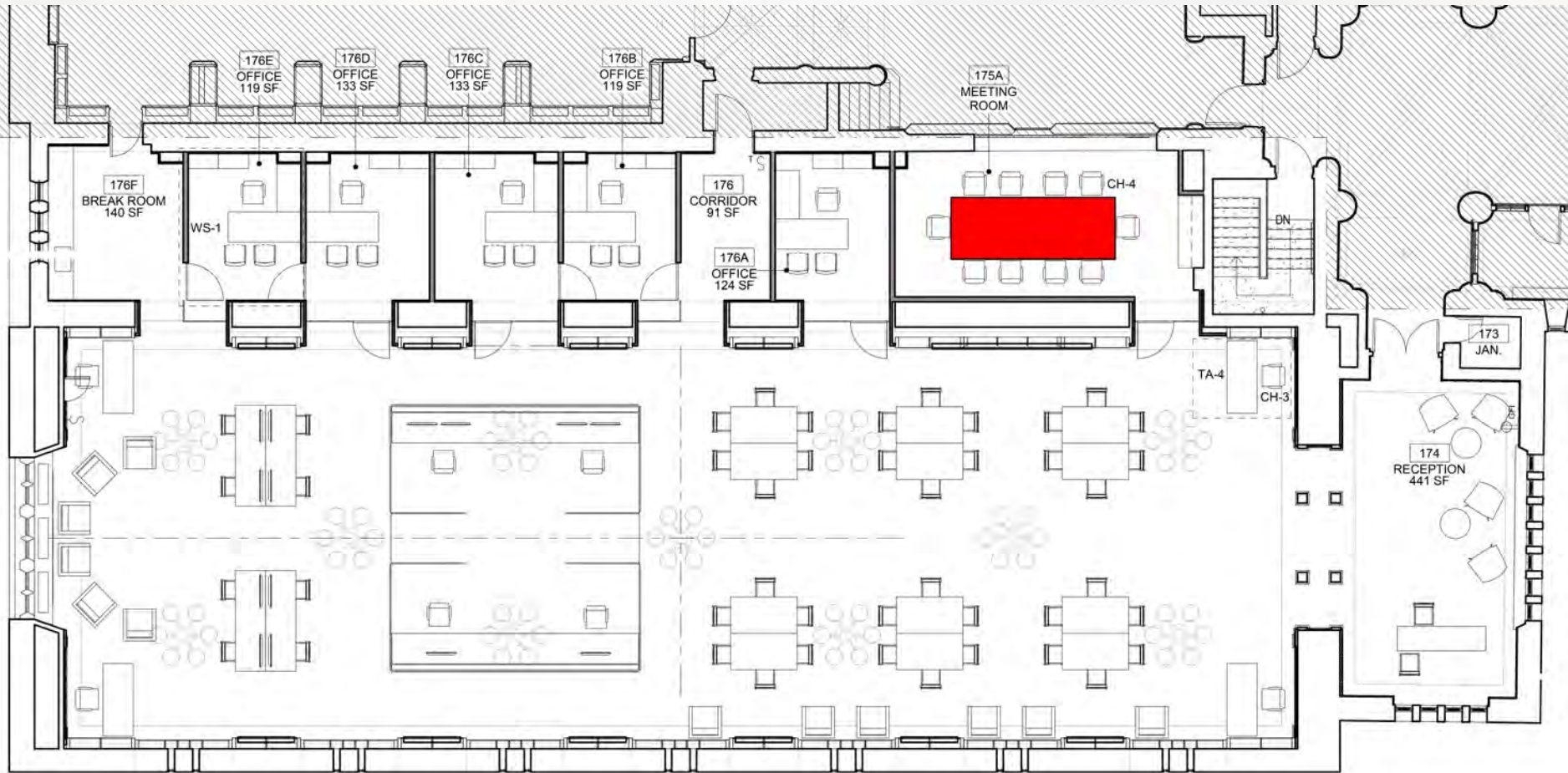






## Adjoining Meeting Room (Former Bookstacks)





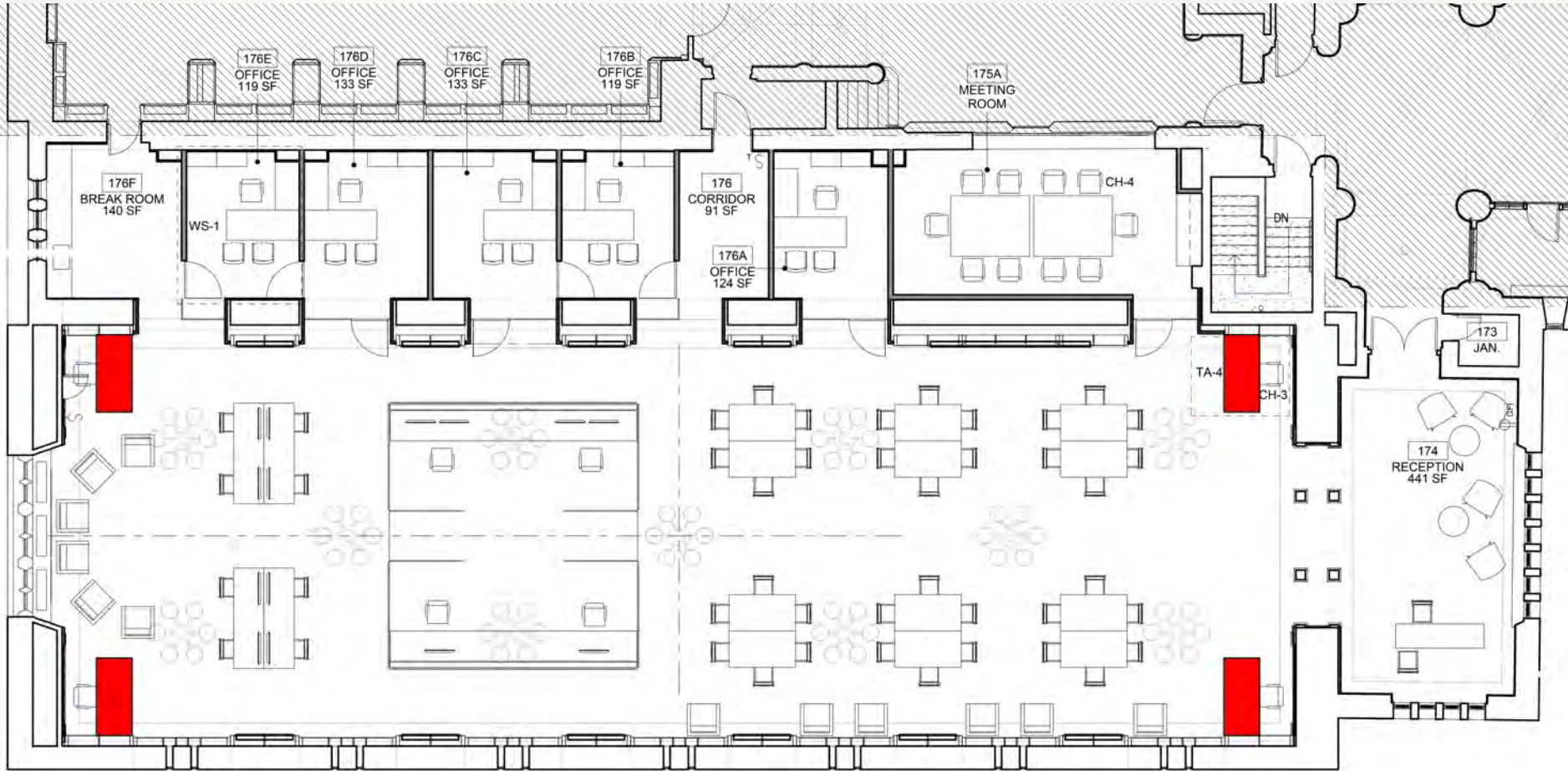
## Adjoining Meeting Room (Former Bookstacks)





# Touchdown Desks





# Touchdown Desks



# Goals & Priorities

- Bring Digital Affordances into a Historic Room
  - Materials
  - View corridors
- Make Digital Humanities Labor Visible
  - Security
  - Transparency
- Balance Structured & Flexible Space
  - Individual activities
  - Group projects
  - Larger workshops



Yale UNIVERSITY LIBRARY  
*Digital Humanities Laboratory*