

Embedding Science in the Science Library



Allan Price Science Commons and Research Library

Presenter

Mark Watson Associate Dean, Research Services, University of Oregon
Library Sponsor for Allan Price Science Commons & Research Library Project

Acknowledgements:

Opsis Architecture

Anderson Construction

University of Oregon, Campus Planning & Facilities Management

Presentation Outline

- **Campus Context:** Site, Location within the science complex
- **Existing Library Condition:** Hidden & Obsolete
- **New Learning Commons:** Celebrated & Relevant
- **Post Occupancy Evaluation Survey:** Likes & Dislikes

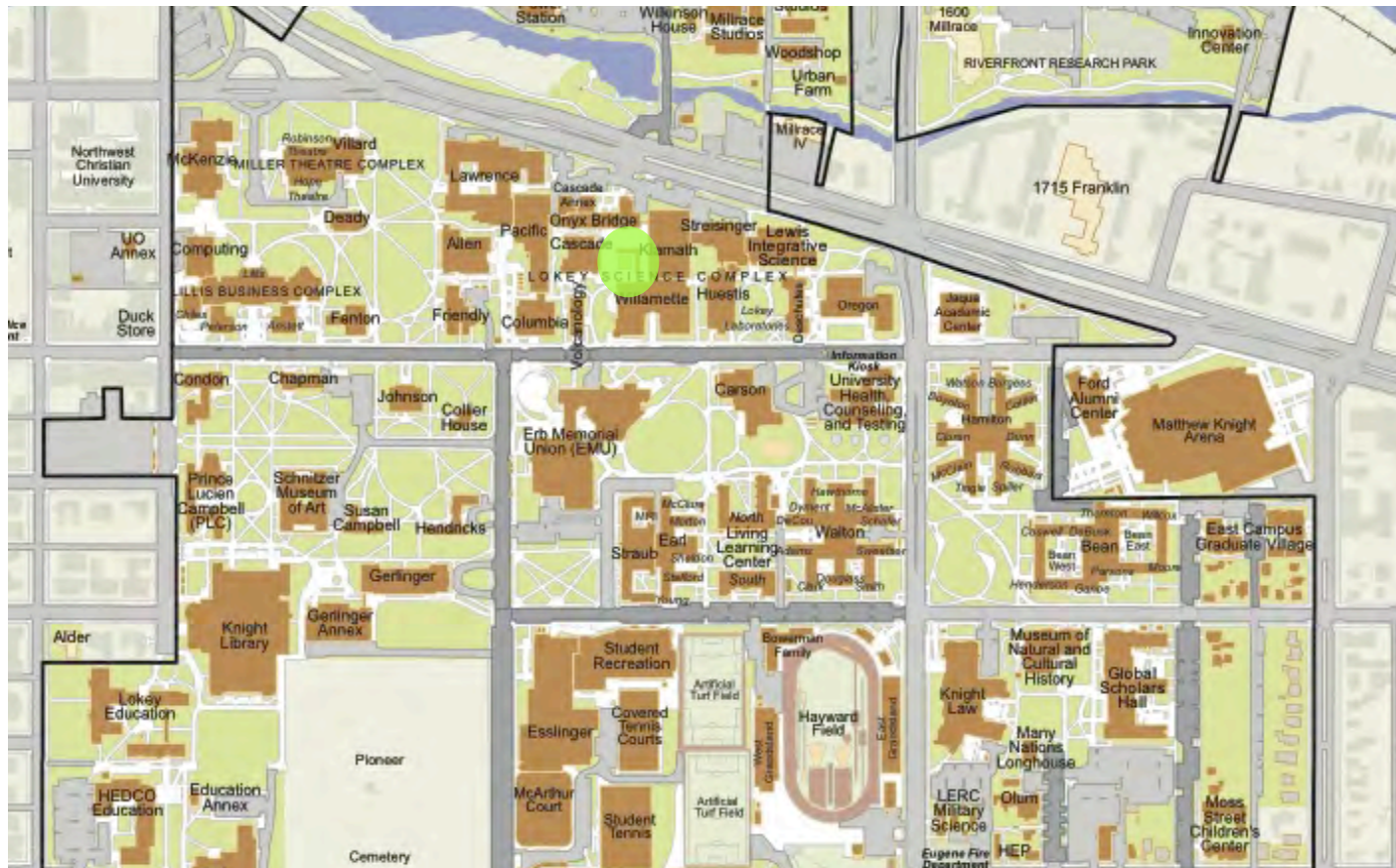


University of Oregon Campus

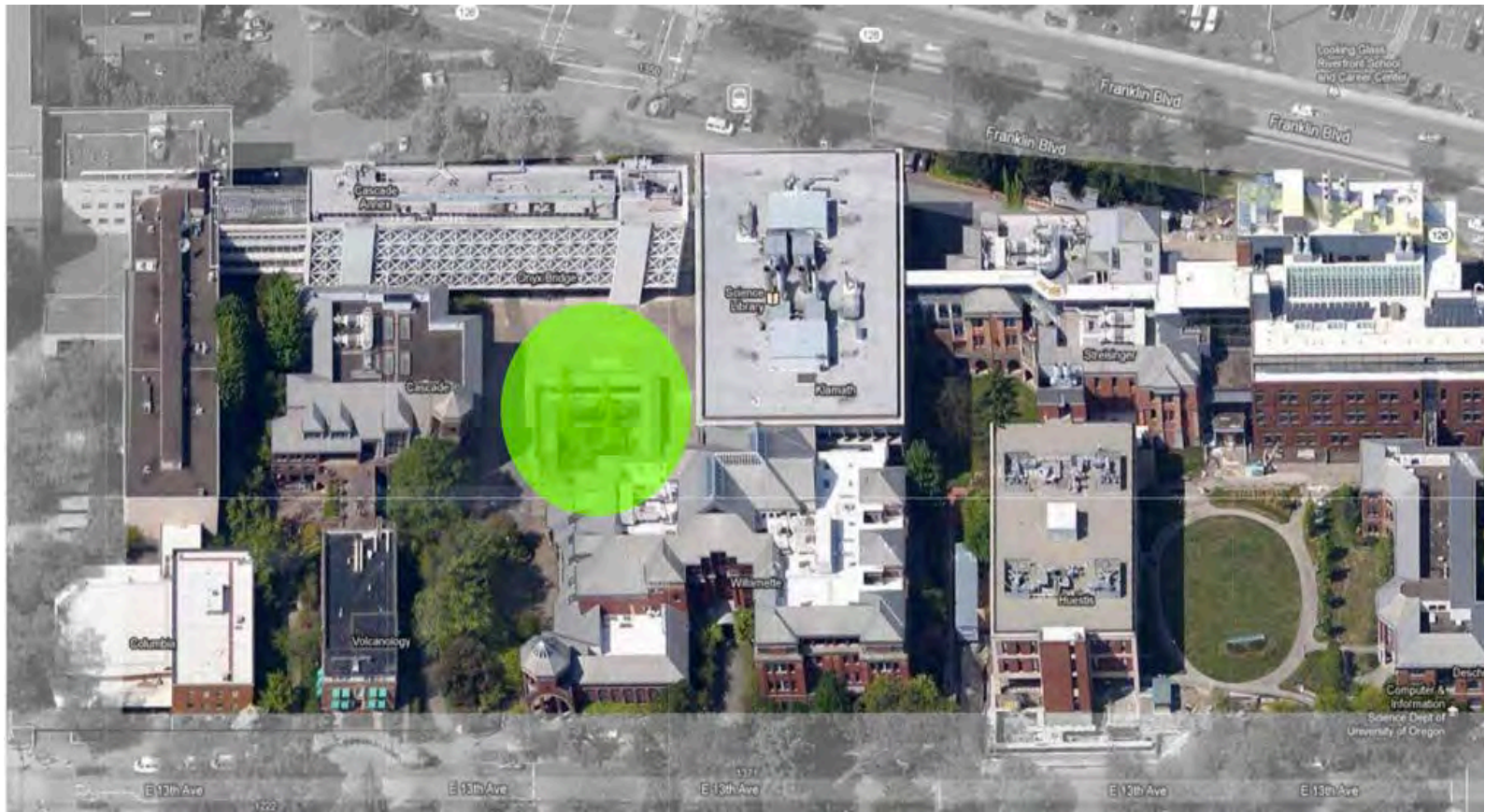


24,500 Students | 260 Acres
Public AAU Institution

Campus Map & Project Site



Lokey Science Complex



Above ground – before the project



PIECEMEAL GROWTH



Science Library Court: The beginning of a slum. This mistake, because it is part of a large lump development, cannot be repaired. There is no money left.

Christopher Alexander *"The Oregon Experiment"*



Project goals:

Site Repair

South Facing Outdoors

Science Hearth

Porous Edge

Access to Daylight

A View Outdoors

Welcoming to All

Courtyards that Live

Main Building Entrance

Positive Outdoor Space

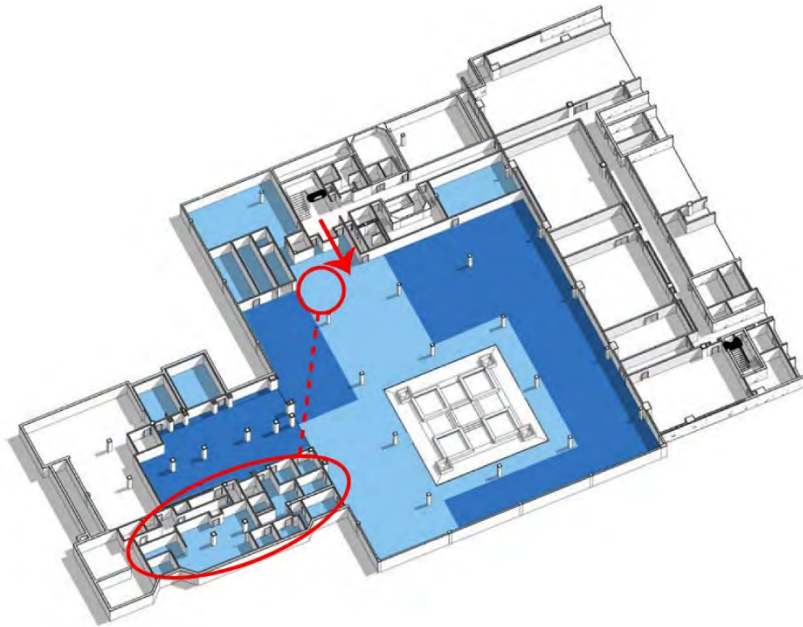
Wholeness of Project

Connected Buildings

No Leaks



Existing Science Library



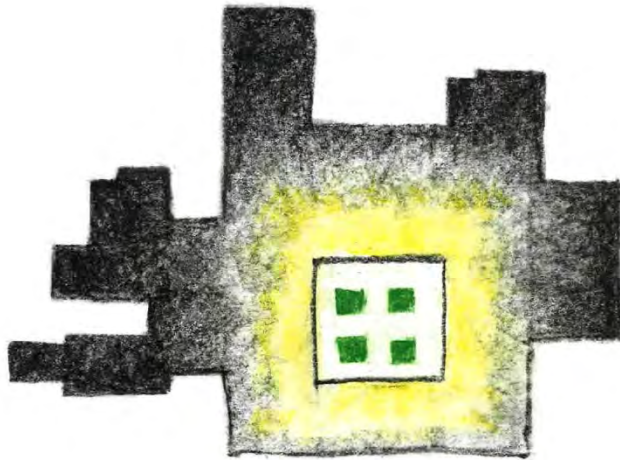




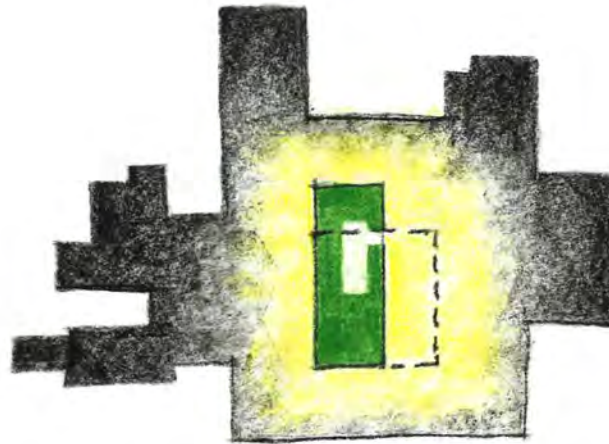




Reshape Courtyard – Enhance Daylighting



Existing



Transformed

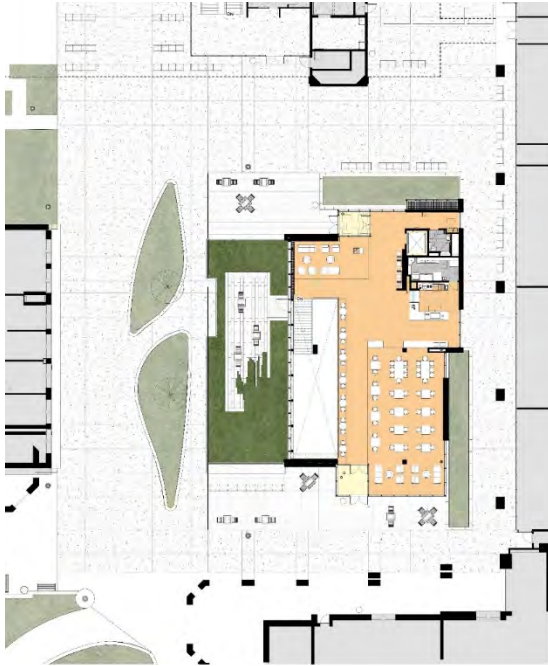
Hidden Library Entrance



Celebrated Library Entrance



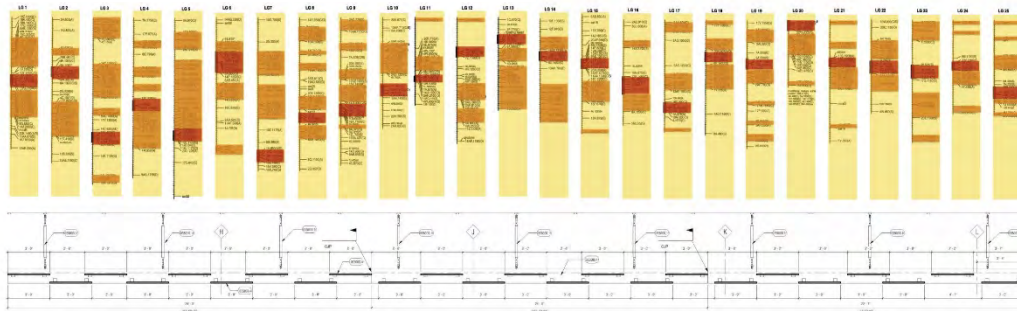
Plaza Level



West Facing Sunscreen



Imprint of Zebrafish DNA Code









Social Commons



Social Commons



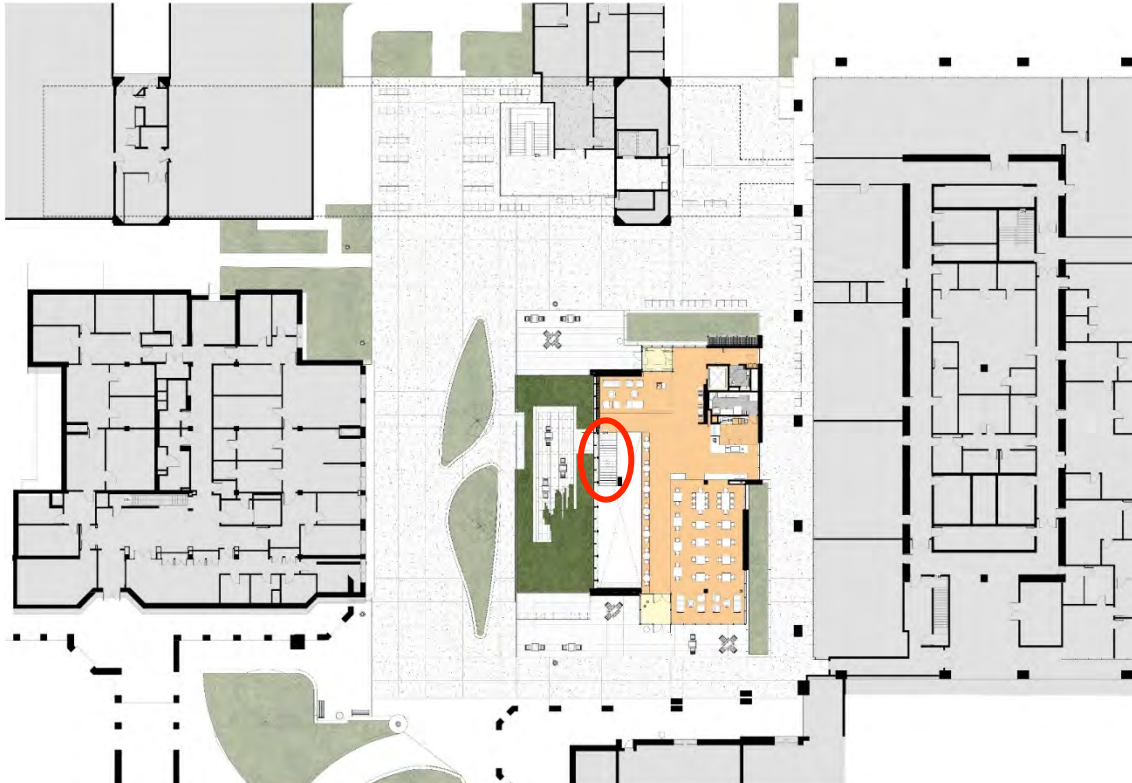
Elements Cafe



Jim

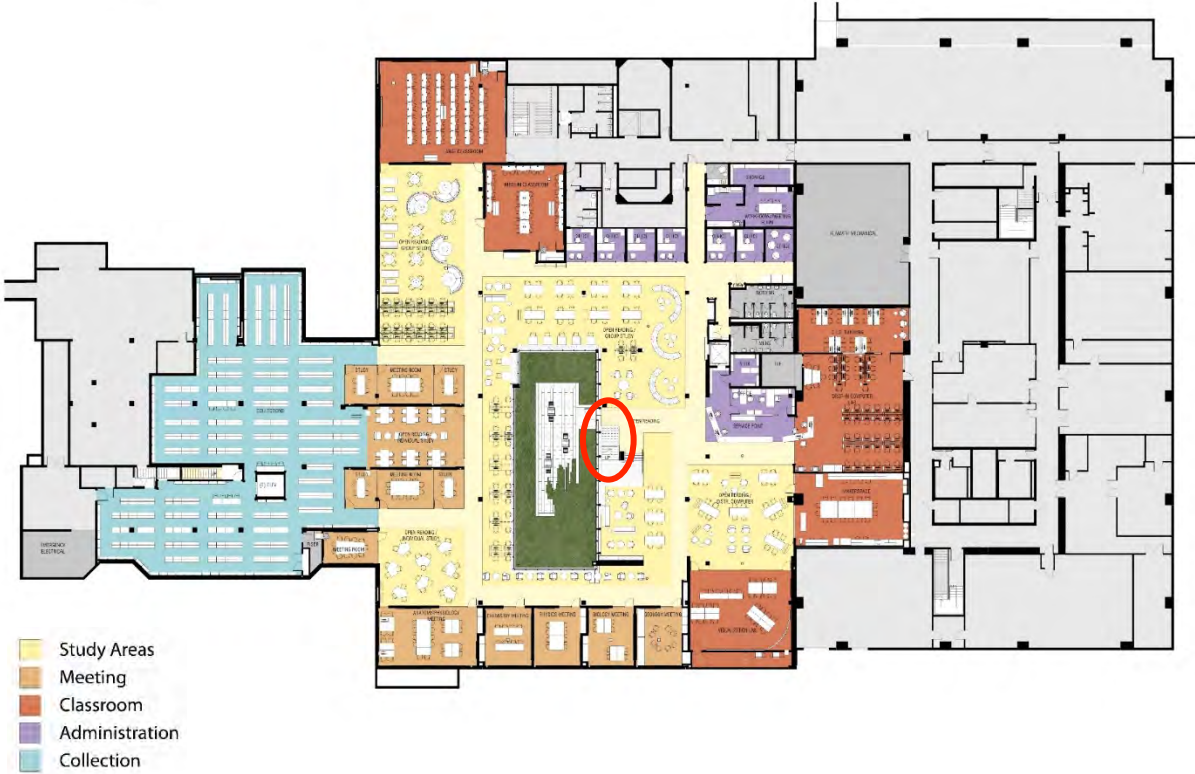


Plaza Level

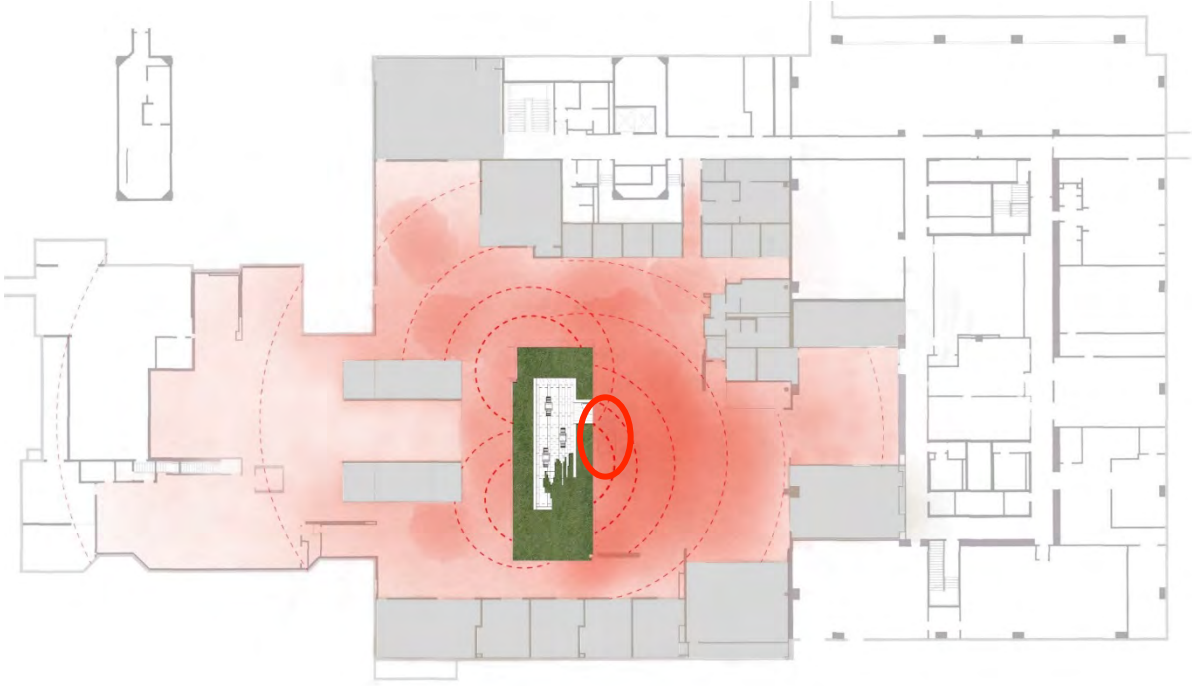




Courtyard Level



Acoustical Zoning



Circulation Desk



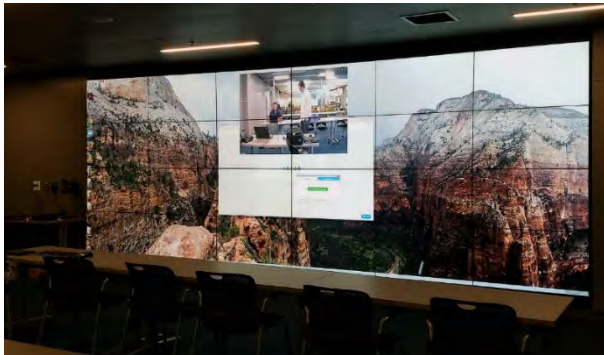
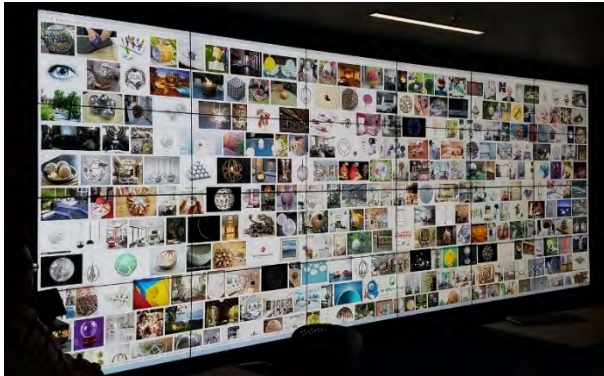
Computer Lab



Visualization Lab



Visualization Lab



Makerspace



Science Departments Meeting Rooms



Individual & Group Study Area



Quiet Study Area



Bookstack Area



Individual & Group Study Area



Classroom



Individual & Group Study Area



Garden Within Library



Likes

- Prominent amount of daylighting
- Location is ideal for science majors
- Shading provides visual interest
- “Social Library” promotes group collaboration



Dislikes

- Often crowded during Midterms and Finals
- Space gets too hot from the direct sunlight
- Lack of visual connection to lower floor
- Some users reported navigation issues









Questions & Discussion

